

24GHz Doppler Transceiver AMG003-E

Features

- Direction of motion identification
- Low consumption (50 mA typ)
- Compact size
- Vehicle detection at 60 m
- Low cost

Applications

- Speed measurement
- Traffic monitoring
- Mobile speed display
- Security - presence detection

Specifications

RF specifications

Frequency	K-band (24.05-24.25GHz)
Output power	1mW (EIRP<20dBm)
Frequency stability	0,6 MHz/° C
Noise level (100 Hz - 10 kHz)	5 µVrms
Pushing	15 MHz/V
Mixer conversion loss (typ.)	12 dB
I/Q amplitude balance	2 dB
I/Q phase balance	±20 Deg

Antennas

Beamwidth (-3 dB) Horiz	10 Deg
Side-lobe level Horiz	<-24 dB
Beamwidth (-3 dB) Vert	20 Deg
Side-lobe level Vert	<-18 dB
Gain per antenna	19 dB

Compliant with

EN300440

DC specifications

Supply voltage	+3.3 or +5V
Supply current	50 mA

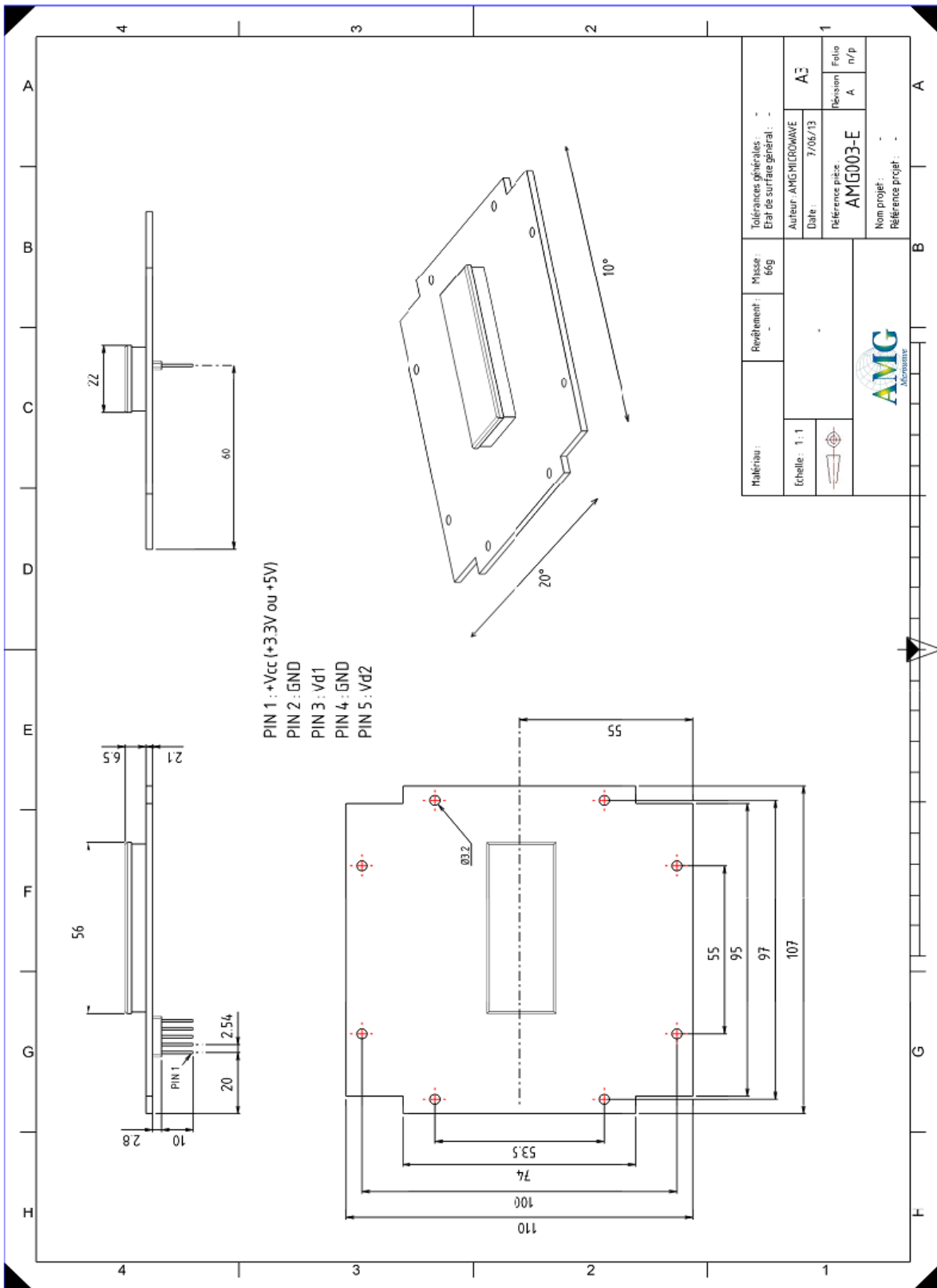
Mechanical specifications

Dimensions	107 x 110 x 10mm
Weight	66g
Connector	2.54mm step 5 pins connector

Environmental conditions

Operating temperature	-30° C..+70° C
Storing temperature	-40° C..+80° C

Drawing



DISCLAIMER :

Different technical specifications are possible upon request, AMG reserves the right to make modifications to the design and characteristic of the product at any times and without prior notice