



24GHz Doppler Transceiver AMG027-001

Features

- VCO 24GHz
- Direction of motion identification
- Very high immunity to adjacent traffic lanes
- compact size

Applications

- Velocity measurement
- Distance measurement
- Mobile speed display
- Security - Presence detection

Specifications

RF specifications

Frequency	24.125 GHz \pm 20MHz
Tuning bandwidth	\pm 35(min) à \pm 60(max)MHz
tuning capacitor port	220 pf
Output power	-5 \pm 3 dBm
Frequency stability	0,25 MHz/° C
Noise level (100 Hz - 10 kHz)	7 μ Vrms
RF pre-amplifier	7 dB
I/Q amplitude balance	2 dB
I/Q phase balance	\pm 20 Deg

Antennas

Beamwidth (-3 dB) Horiz	18 Deg
Side-lobe level Horiz	<-25 dB
Beamwidth (-3 dB) vert	4 Deg
Side-lobe level vert	<-30 dB
Gain	24 dB

Compliant with

EN300440

DC specifications

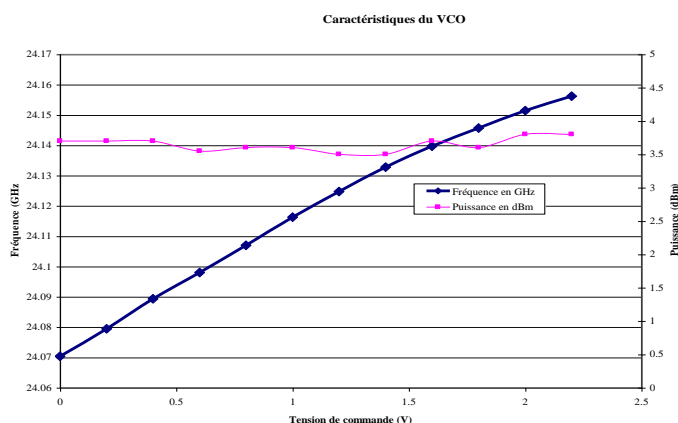
Supply voltage Vd	+5V \pm 5%
Supply current Id (max)	90 mA
Tuning voltage Vtune	0 à 2.5V
Tuning current Itune (max)	100 μ A
Grid voltage Vg	-5V \pm 10%
Grid current Ig (max)	4 mA

Mechanical specifications

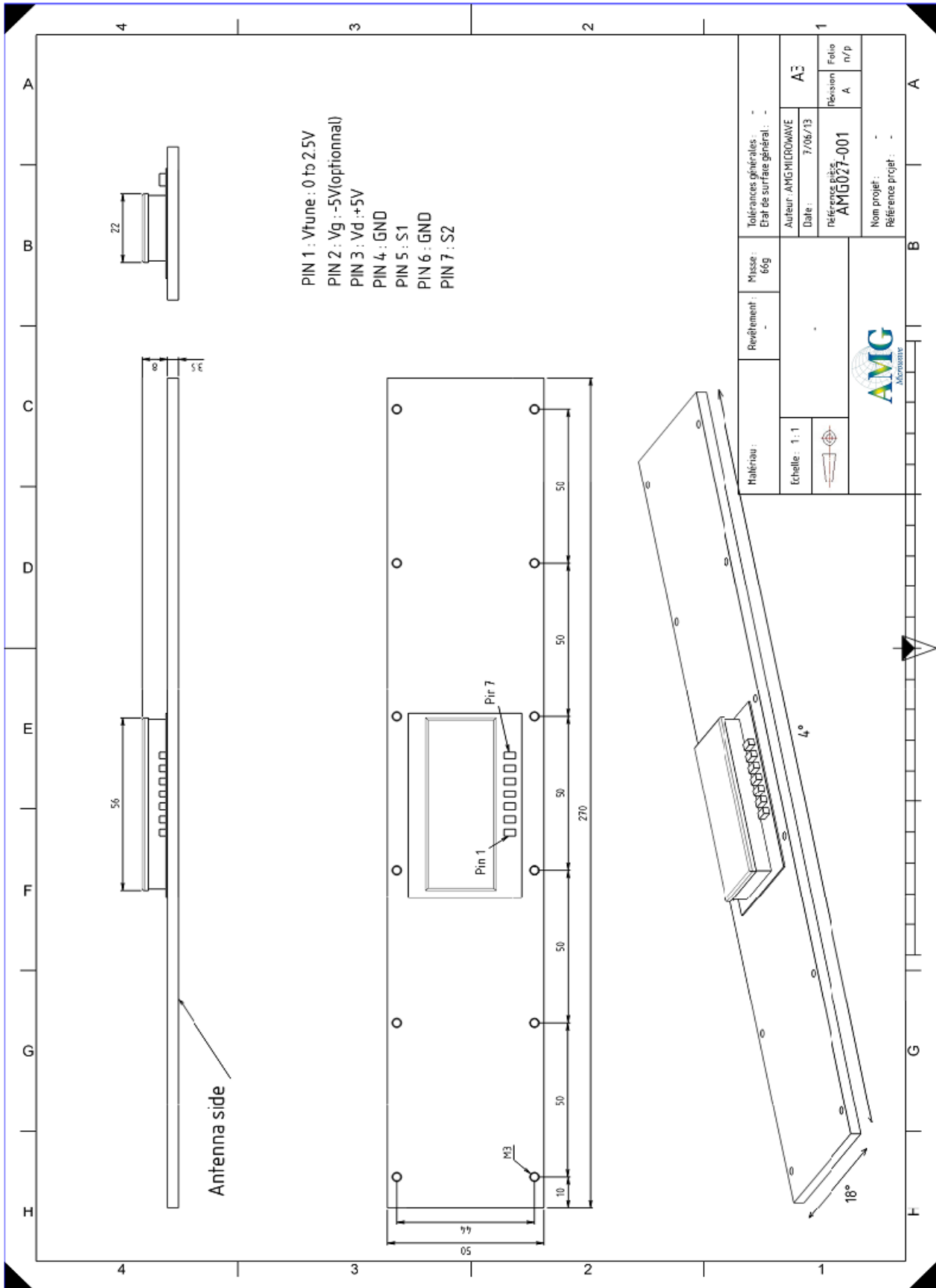
Dimensions	270 x 50 x 12mm
Connector	Solder pads

Environmental conditions

Operating temperature	-30° C..+70° C
Storing temperature	-40° C..+80° C



Outline drawing



DISCLAIMER :

Different technical specifications are possible upon request, AMG reserves the right to make modifications to the design and characteristic of the product at any times and without prior notice