

24GHz planar antenna

Features

- Thickness : 3.5mm (without connector)
- Waveguide (WR42) or SMA connector

Applications

- Sensors
- Point to point link

SpEcifications

RF specifications

Frequency	24.150 GHz \pm 100MHz
Beamwidth (-3 dB) H plan	8 Deg (\pm 0.5)
Sidelobe level H plan	<-20 dB
Beamwidth (-3 dB) E plan	15 Deg (\pm 1)
Sidelobe level E plan	<-25 dB
Nominal gain	23 dBi
VSWR (24.125 \pm 50MHz) :	< 2 : 1

Connector

Waveguide WR42 or SMA female

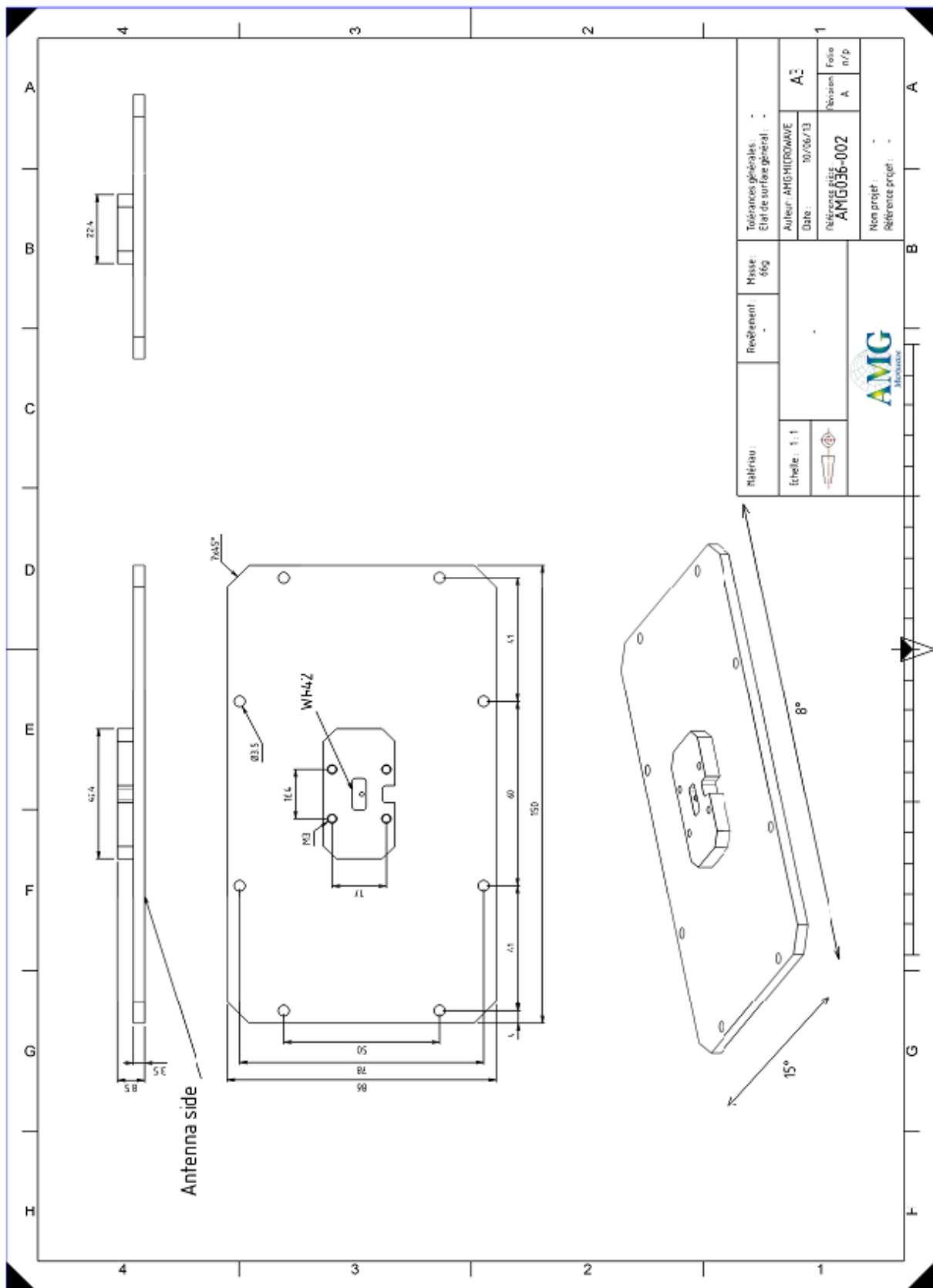
Mechanical specifications

Size (with waveguide WR42)	150 x 86 x 8.5mm
Weight	

Environmental parameters

Operating temperature	-30° C..+70° C
Storing temperature	-40° C..+80° C

Outline drawing



DISCLAIMER :

Different technical specifications are possible upon request, AMG reserves the right to make modifications to the design and characteristic of the product at any times and without prior notice